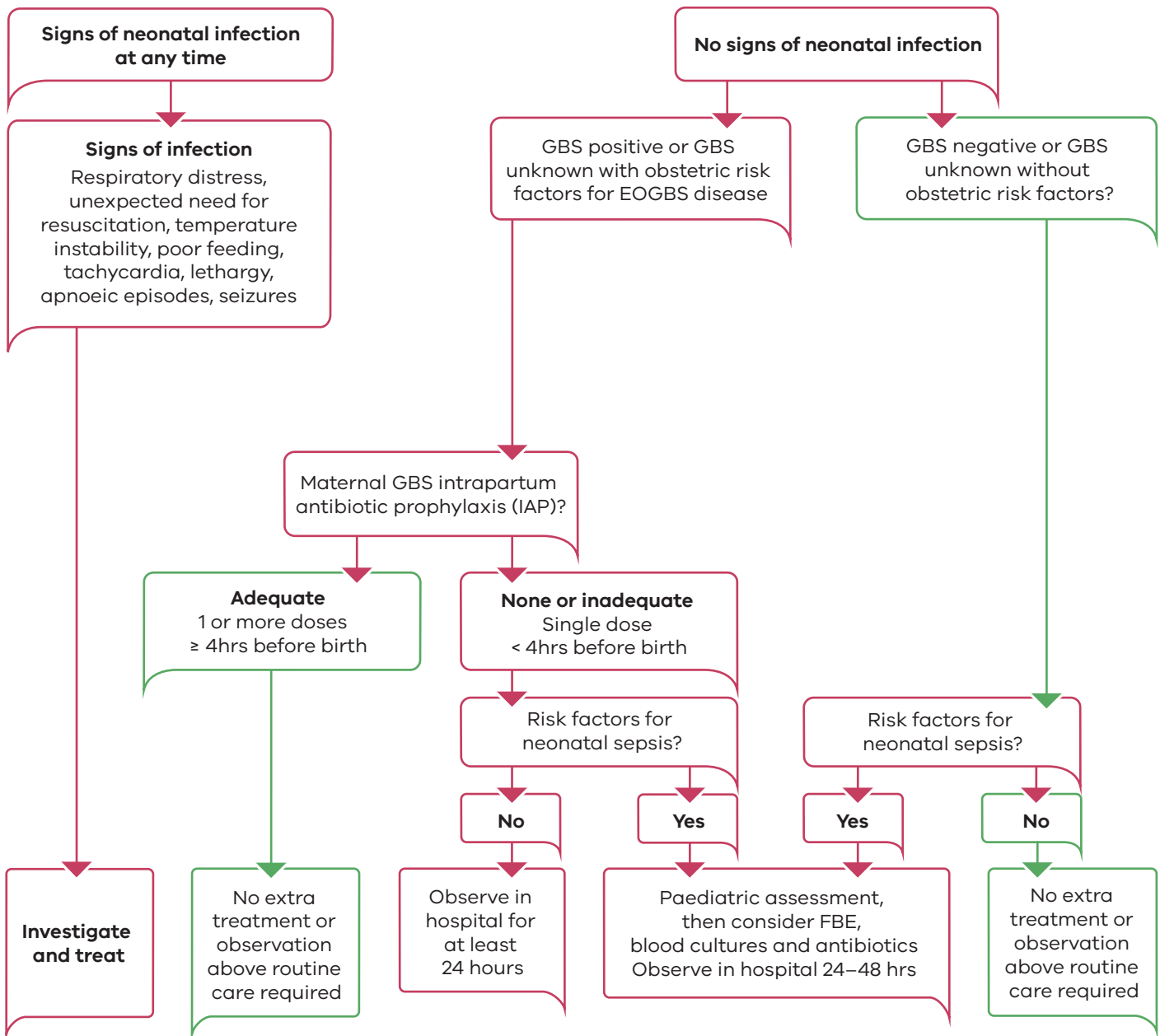


GBS: Neonatal management

All newborn babies are at risk of infection irrespective of gestation, maternal risk factors or adequacy of IAP



Observations: full set at birth, then hourly for a further 3 hours, then 4 hourly for 24hrs.
Document observations on a track and trigger chart, e.g. ViCTOR birth suite/postnatal.

To receive this publication in an accessible format phone 03 9096 1308, using the National Relay Service 13 36 77 if required, or email maternityhandbook@safercare.vic.gov.au

Authorised and published by the Victorian Government, 1 Treasury Place, Melbourne.
© State of Victoria, Australia, Safer Care Victoria, February 2019
ISBN 978-1-76069-170-1 (pdf/online)

Available at www.bettersafercare.vic.gov.au (1710003)

